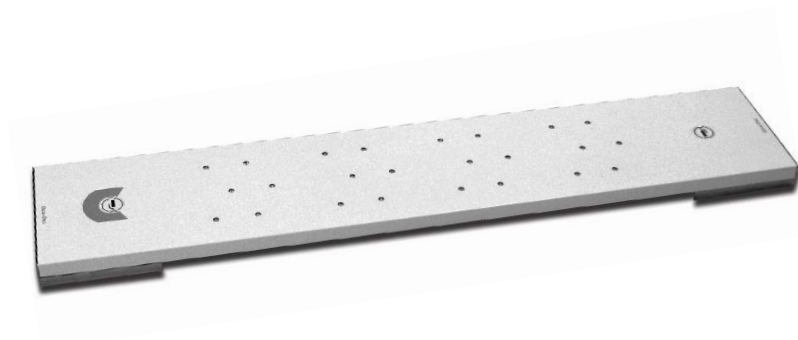


The Beamforming Microphone Array is the Pro-Audio industry's first professional-grade microphone array with beamforming and adaptive steering technology and ClearOne's next-generation Acoustic Echo Cancellation. The ultra-sleek design fits into any conferencing environment and delivers the clearest audio pickup available with adaptive acoustic processing.



Applications

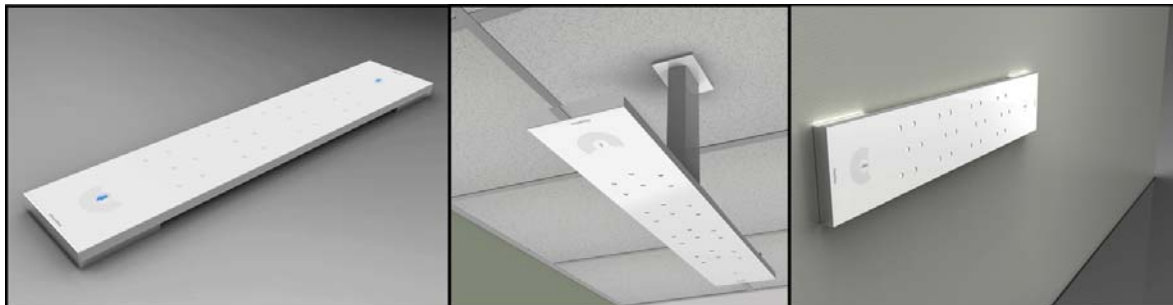


- Board Room
- Conference Room
- Training Center
- Courtroom
- House of Worship
- Telepresence

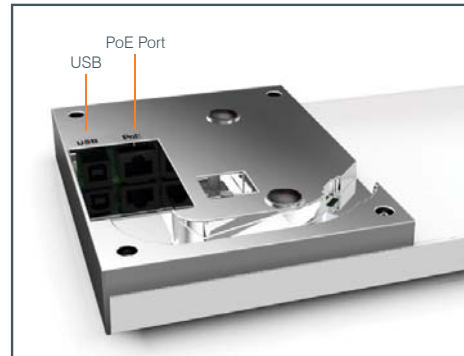
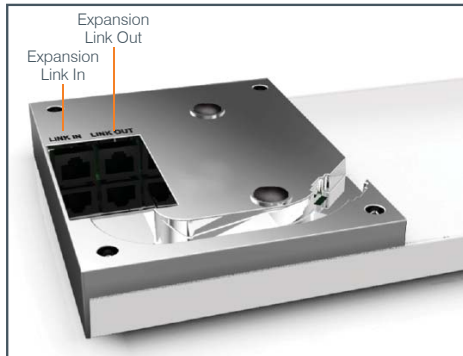
Features



- + Beamforming & adaptive steering technology
- + Next-generation Acoustic Echo Cancellation
- + 24 microphone elements
- + Mono and stereo modes for diverse applications
- + Flexible mounting for ceiling, wall and tabletop
- + Works with CONVERGE® Pro products: 880, 840T, 880T, 880TA
- + Expandable for larger room applications by daisy-chaining up to three arrays per CONVERGE® Pro unit
- + Adaptive acoustic processing automatically adjusts to room configuration for best possible audio pickup
- + Replaces up to 10 traditional microphones, with twice the pick-up range



BEAMFORMING MICROPHONE ARRAY CONNECTIONS



Functional Specifications

AUDIO

Acoustic Characteristics:

- 24 microphones
- Auto voice tracking
- Polar Pattern:** Custom
- Frequency Response:** 150Hz - 16kHz
- Signal to Noise Ratio:** > 70 dB
- AEC Tail time:** 128 ms
- Noise Cancellation:** 6 - 15 dB adjustable

Auto Mixer Parameters:

- Number of Open Microphones (NOM)
- First mic priority mode
- Last mic mode
- Maximum number of mics mode
- Ambient level
- Gate threshold adjust
- Off attenuation adjust
- Hold time
- Decay rate

Matrix Mixing Parameters:

- 1 Channel In
- 18 Expansion Bus In/Out

Beamforming Mic Array Configuration:

- Echo cancellation on/off
- Noise cancellation on/off
- Filters:
 - All Pass
 - Low Pass
 - High Pass
 - Notch
 - PEQ
- ALC on/off
- Gain adjust
- Mute on/off
- Auto gate/manual gate

POWER

- PoE IEEE 802.3AF-2003
- CAT-5 cable or higher
- 6 watts average power consumption

EXPANSION BUS IN/OUT

- Proprietary Network
- RJ-45 (2)
- Category 5 twisted-pair cable for 200 feet maximum cable length between any two CONVERGE Pro devices

USB

- Not currently supported. Available for future use

RS232

- Commands through CONVERGE Pro

CONFIGURATION & ADMINISTRATION SOFTWARE:

- CONVERGE Console (4.x)

WEIGHT

- 4.4 lbs (2.0kg)

MECHANICAL

- 30.0" x 1.00" x 5.75" (WxHxD) (762mm x 25.4mm x 146mm)

MOUNTING

- Ceiling mount kit with 12" spanner
- Ceiling mount kit with 24" spanner

ENVIRONMENTAL

- Operating Temperature
- 14° F/-10° C to 122° F/50° C ambient temperature

INSTALLATION

Optimum Mounting Height: About 8 - 10 foot ceiling

Optimum Coverage Distance:

- About 6 - 10 traditional cardioid mics
- About 2 - 3 ClearOne ceiling mic array
- About 8 - 10 foot radius

SUPPORTED CONVERGE PRO*

- CONVERGE Pro 840T
- CONVERGE Pro 880
- CONVERGE Pro 880T
- CONVERGE Pro 880TA

*Maximum 3 Beamforming microphone array per each supported CONVERGE Pro unit and maximum 16 units in one stack

PART NUMBERS

- 910-001-003: Beamforming Microphone Array
- 910-001-004: PoE Power Supply & Cables Kit for BFM Array
- 910-001-005-12: Ceiling Mount kit with 12 inch spanner for BFM Array
- 910-001-005-24: Ceiling Mount kit with 24 inch spanner for BFM Array

ClearOne Contacts

North America
Tel: 801-975-7200
Toll Free: 800-945-7730
TechSales: 1-800-705-2103
Fax: 801-977-0087
sales@clearone.com

Europe & Oceania
Tel: +44 (0) 1189 036 053
global@clearone.com

Asia Pacific
Tel: +852 3590 4526
global@clearone.com

Latin America
Tel: 801-974-3621
global@clearone.com

Middle East
Tel: +852 3590 4526
global@clearone.com